

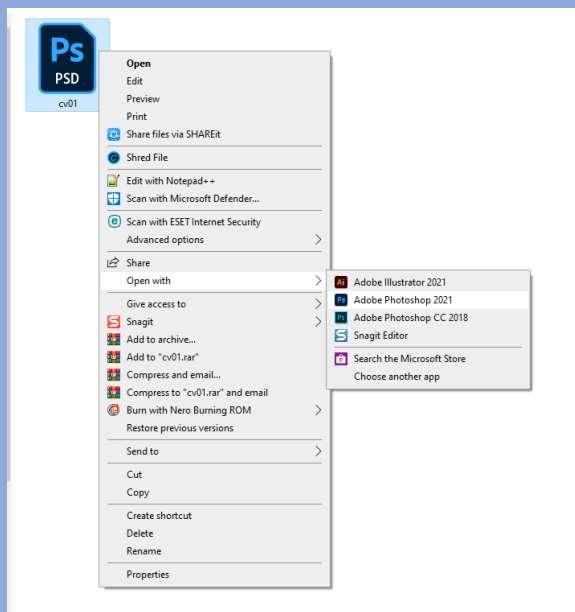
USER HELP

Contents

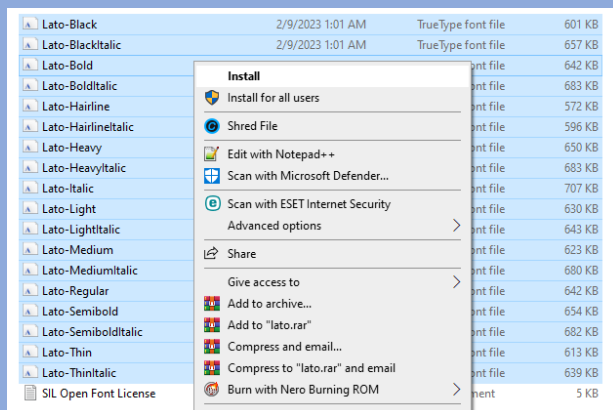
- 1-File Opening
- 2-Edit Texts
- 3-Change Avatar Picture
- 4- Edit Scores Value
- 5-Saving Final Result

1-File Opening

After installing PhotoShop App Successfully
You can Open The PSD file Only just by
dabble clicking on it Or right click then using
openwith tab and choosing Photoshop.

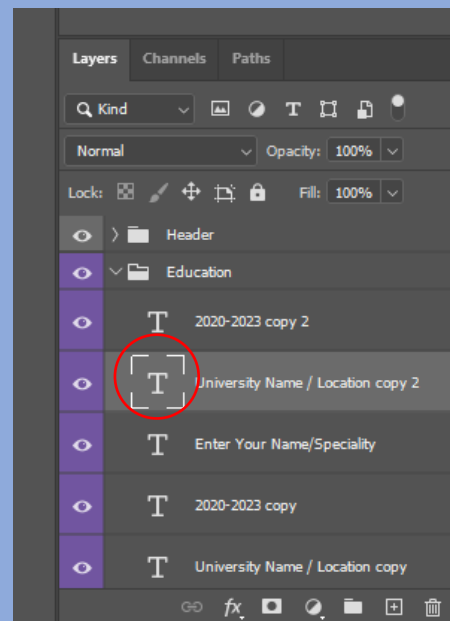
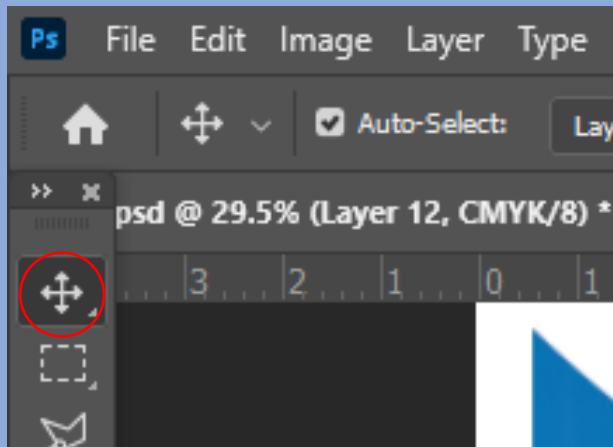


Before start editing project insure that fonts
used in project are installed.



2-Edit Texts

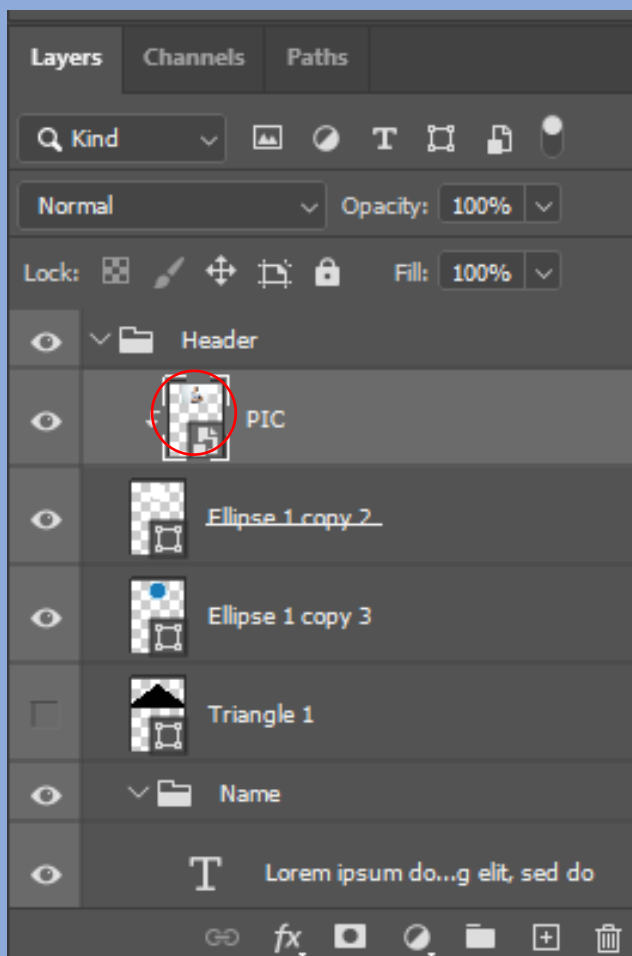
*First Find your text layer by right clicking on it selecting move tool or use layer groups.



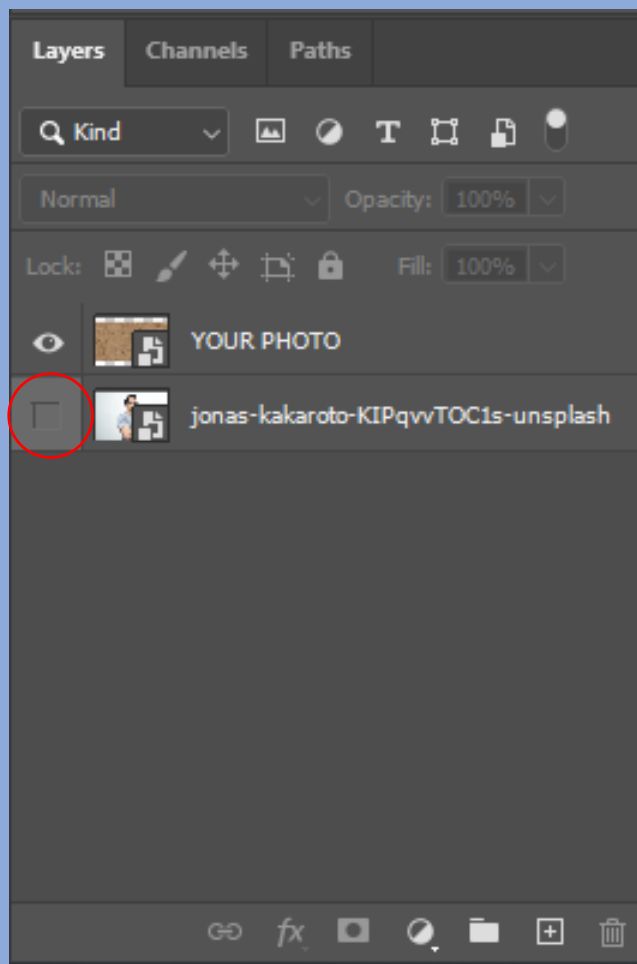
*Now double click on “T” icon near layer name in layers tab to activate editing and type your custom text.

3-Change Avatar Picture

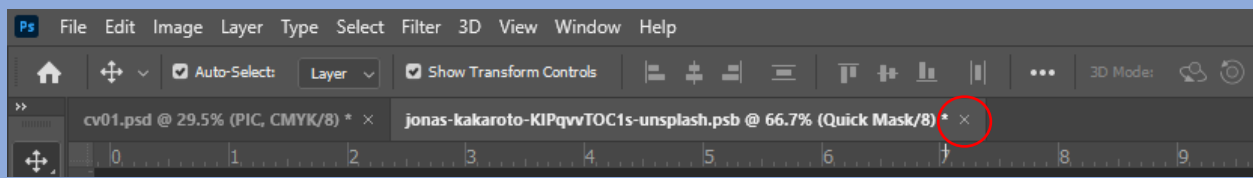
First select Header group in layers tab and find “PIC” layer then double click on its icon in layers tab group to open new window in photoshop.



Drag your personal picture from your desktop or folders and drop in Photoshop new opened window. Now deactivate recent picture by click on eye icon to show just your picture also can delete recent layer.



Now press keys CTRL+S to save changes then close this window and refer to main project window.



You can by click on your avatar and dragging it to the left and right regulate the true position of photo. If resize is needed press CTRL+T and use control handles while holding SHIFT key to change size of photo.

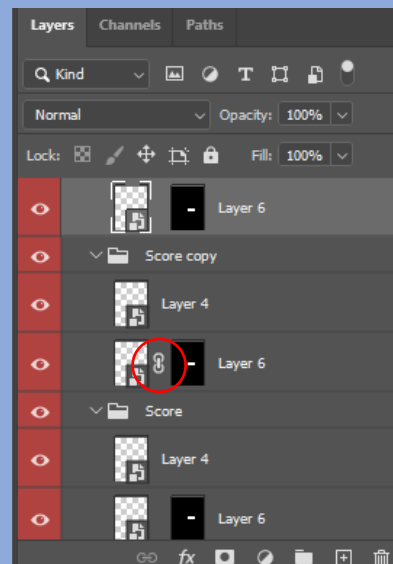
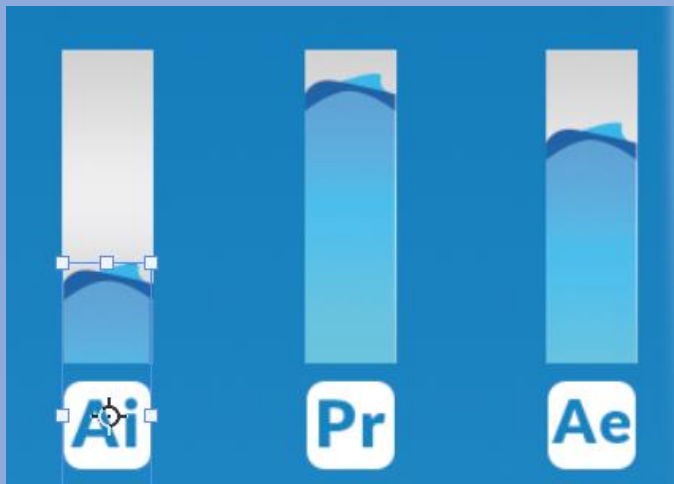


4- Edit Scores Value

4 type of scoring scale is used in these designs:

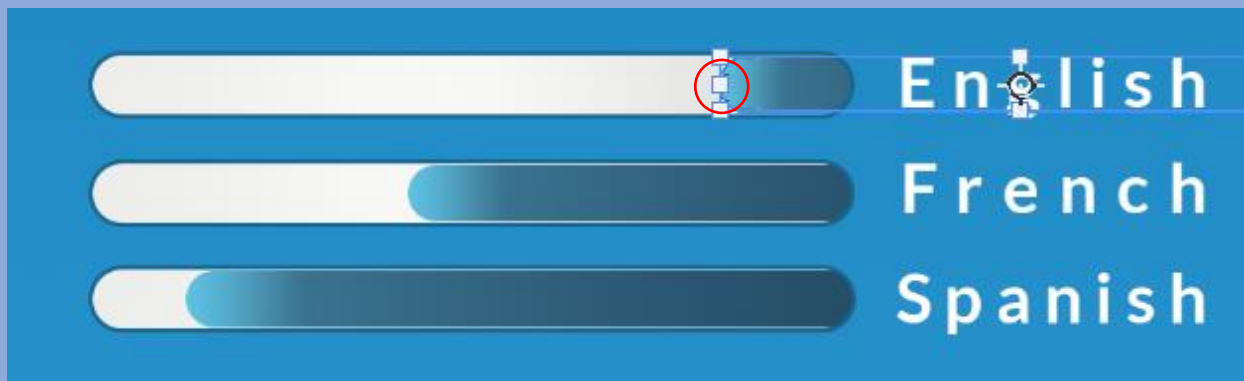
A:Pipes/ brush stork/SIM bars

In all of this type you can change value just by clicking on full piece of bar and dragging to right and left or up and down while SHIFT key is held. Notice that the LINK icon showing a small chain (If exists) front of layer is off.



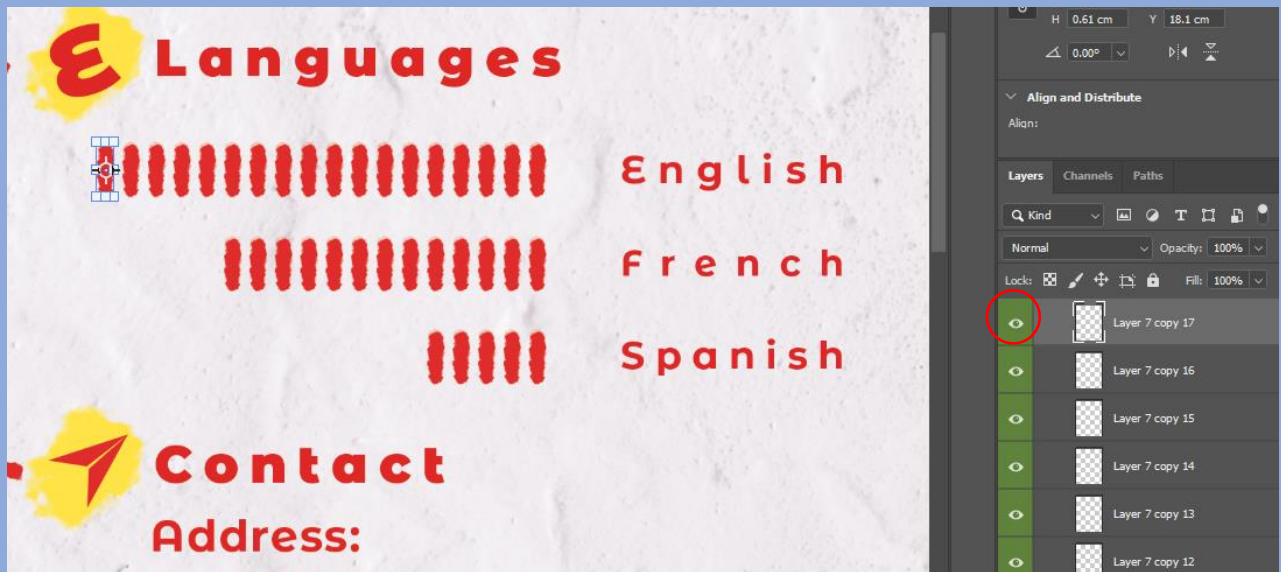
B: bars

Click on full part of bar to select related layer. Press CTRL+T and use transform handles to change bar size and then click checkmark icon or press enter. Don't forget holding SHIFT key to protect bar aspects.



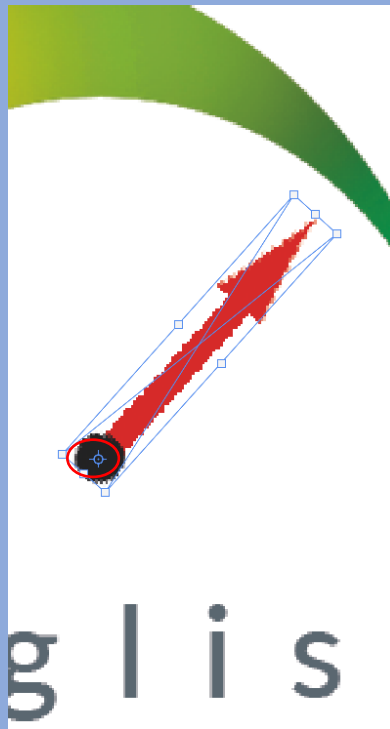
C:Lines

Just click on extra lines and deactivate their layers on layer tab by click on eye icon.



D: Gages

Click on gage pointer layer to select it. Press CTRL+T to open transform mode. Now you can rotate pointer. Its better to set the anchor point center of black circle and then rotate.

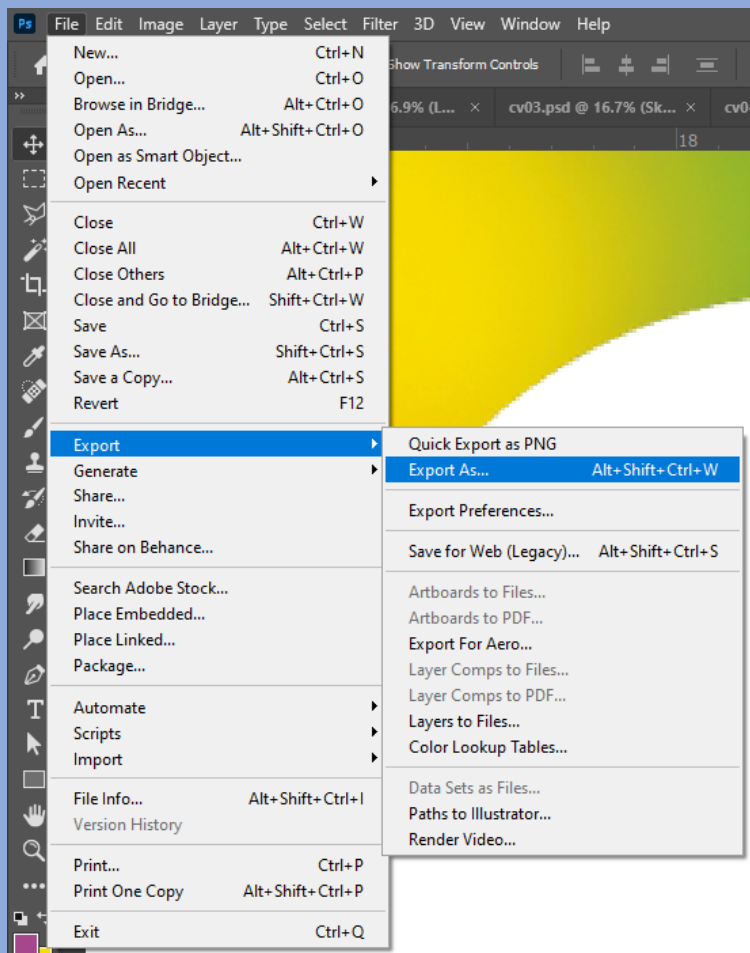


5-Saving Final Result

When your changes finished its time of exporting. Go to this path then select JPEG format and export your final file:

File/Export/Export As/choose JPG

If you want to print file deactivate convert to SRGB.



GOOD LUCK